



# LIMITED HANGOUT

christian olid-ramirez

KILLCHAIN + Satellite paintings

March 11, 2023–May 21, 2023

Opening Reception: March 24

Eli and Edyth Broad Art Museum, East Lansing MI

# **Limited Hangout**

**Intelligence jargon for a form of propaganda in which a selected portion of a scandal/criminal act/sensitive or classified information, etc. is revealed or leaked with the intention to deceive, mislead, corrupt or obfuscate.**

**As part of a quest to develop a balanced approach to exploring digital potential, the imagery in christian olid-ramirez's paintings comes about by him transferring algorithmically or AI-generated images onto his canvases using a broad range of traditional studio media, with the result that what appear to be passages of purely abstract brushwork are likely to have originated in clusters of code. Once these image transfers have occurred, his studio process becomes partly an act of camouflage, as he works to accommodate patterns, textures, words and other details into the larger composition. Most of the paintings' titles — LETHAL AID, SURGICAL STRIKE, ENHANCED INTERROGATION, and FRIENDLY FIRE are good examples — are derived from military communications, furthering the suggestion that the most benign surfaces and details within the paintings might be connected to some form of enforced order. This intentional blurring of sources is one factor that enables the work to convey an ambiguous visual tension.**

**olid-ramirez's painting DETENTION CAMP: CTHULUSCENE offers a good window into his thinking and studio process. Laying down a black background and partial grid outlined in green, he has arranged three dozen roundish colored shapes, loosely following the boundaries indicated by the grid, with shapes close to the perimeter crisply outlined by black edges, and those in the interior blending more fluidly into their backgrounds. Suspended over this layer is a quadrant of four realistic images of seashells, interconnected by thick impasto lines that also serve as a buffer between the interior and exterior zones. The accumulated effect is of overlaid visual cues imported from distinct systems of reference that coexist in an oscillating state of dynamic friction, with conspicuous points of overlap.**

**In purely quantitative terms, most of the painting FRIENDLY FIRE: HATE MACHINE composition belongs to a more straightforwardly abstract painterly tradition, with the presence of large swaths of bright yellow planes and a pair of labyrinths reinforcing the work's more contemplative aspect. The central location of the word "HATE," juxtaposed with a sideways image from Goya's Fights with Cudgels, in which two enemy soldiers trapped in a bog continue to flail at each other, makes it apparent that olid-ramirez wants us to peer more closely at the more seemingly benign quadrants of the painting, and to question whether something more sinister has escaped our attention.**

**olid-ramirez's apparent conviction that any painting, even abstract, should strive to communicate the essence of its creator's world-view has brought him to the center of public discourse surrounding the place of digital technology in our everyday lives, while forging a visual vocabulary whose potency comes from its capacity to both reveal and conceal its deeper intentions.**

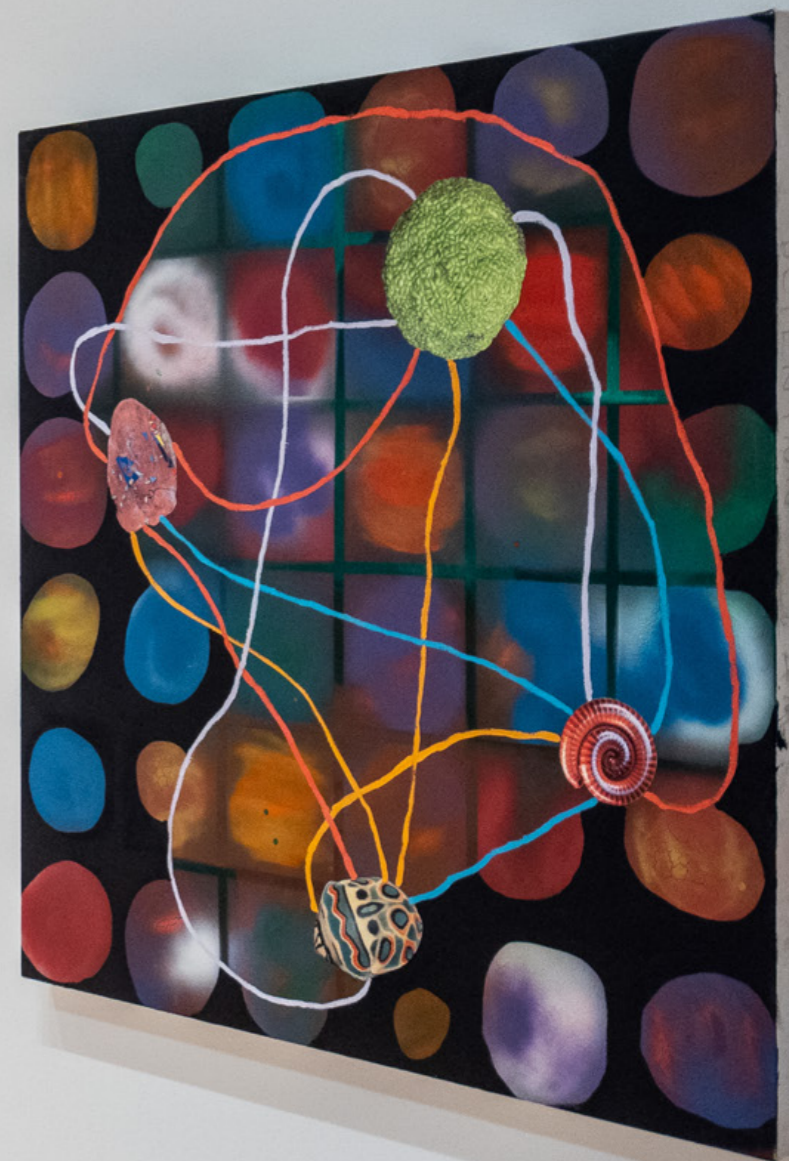
**Dan Cameron 2023**

**EXTRAORDINARY RENDITION / DETAINEES /  
BLACK SITE / GRAY ZONE / ASYMMETRICAL  
WARFARE / TARGETED KILLINGS / DRAW  
DOWN / PROLONGED DETENTION / COVERT  
WAR / DETENTION FACILITIES / SLEEP  
MANAGEMENT / ILLEGAL COMBATANTS /  
STRESS POSITION / OVERSEAS  
CONTINGENCY OPERATIONS / COLLATERAL  
DAMAGE / BOOTS ON THE GROUND /  
PACIFICATION / NEUTRALIZATION /  
PRECISION BOMBING / PEACE KEEPING  
OPERATIONS / ASSERTIVE DISARMAMENT /  
COERCIVE POTENTIAL / BLUE ON BLUE /  
CLEANSED / TERRORIST / FREEDOM**





Informational label for the artwork.





**DETENTION CAMP: CTHULUSCENE**  
oil paint, collage, spray paint on canvas  
36"x 36" 2022







**ENHANCED INTERROGATION: GOLDEN MOTH SHOWERMAKER**  
oil paint, collage, yupo paper on canvas  
36"x 36" 2022





**LETHAL AID: CHILD'S PLAY**  
oil paint, collage, yupo paper on canvas  
24"x 24" 2022



**LETHAL AID: GUARDIAN**  
oil paint, collage on canvas  
24"x 24" 2022



**LETHAL AID: CORAL**  
oil paint, collage on canvas  
24"x 24" 2022



Small white label with text, likely identifying the artwork.



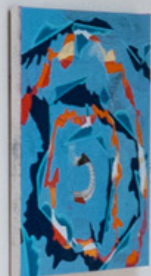
Small white label with text, likely identifying the artwork.



Small white label with text, likely identifying the artwork.



Small white label with text, likely identifying the artwork.



Small white label with text, likely identifying the artwork.



**THIN THREAD: SUPER INTELLIGENT HURRICANE**

oil paint, collage on canvas

36"x 36" 2022-2023





**SURGICAL STRIKE: MIND VIRUS**  
oil paint, collage on canvas  
24"x 24" 2022



Small white label with text, likely providing the title and artist information for the artwork on the left.



Small white label with text, likely providing the title and artist information for the artwork in the middle.



Small white label with text, likely providing the title and artist information for the artwork on the right.



**ENEMY NONCOMBATANT: HEADHUNTER**  
oil paint, collage, colored pencil on canvas  
36" x 36" 2022



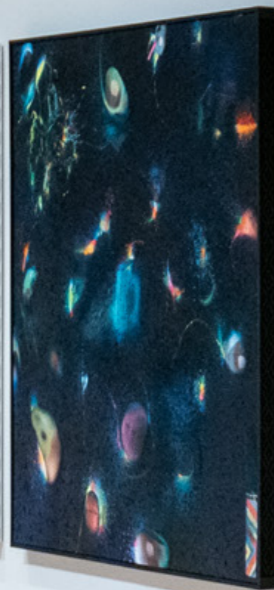
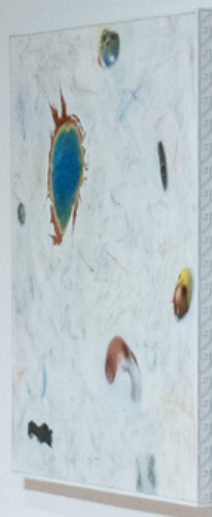
**EXTRAORDINARY RENDITION: STREETS OF RAGE**

oil paint, collage on canvas

36" x 36" 2022-2023



**GREY ZONE: DARK WEB**  
oil paint, collage, pastel crayon, spray paint on canvas  
36" x 36" 2022



Small white label with text.

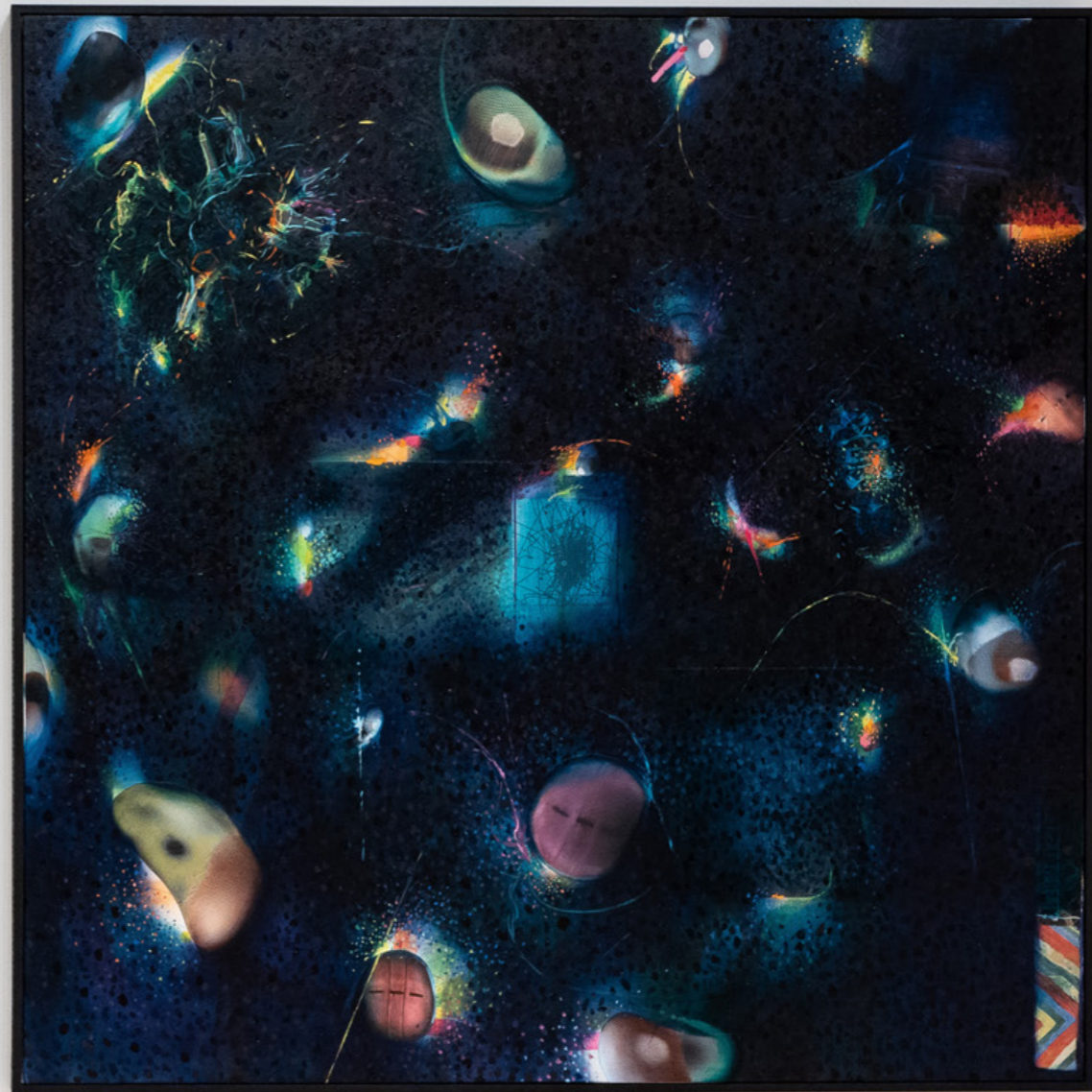


Small white label with text.



Small white label with text.

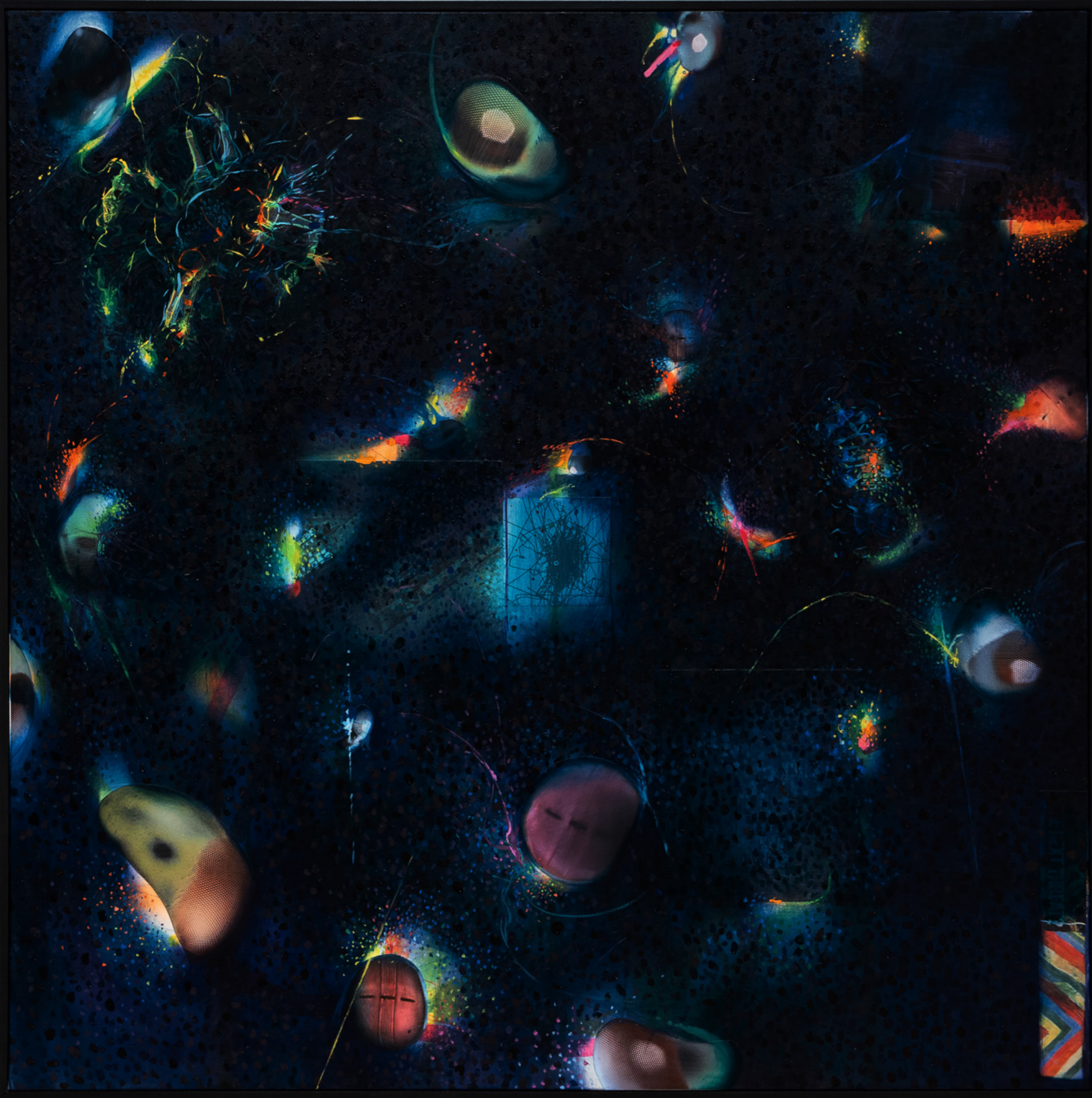




Small text labels, likely artist or title information, located to the right of the artwork.









**FRIENDLY FIRE: HATE MACHINE**

**oil paint, collage on canvas**

**36" x 36" 2022-2023**



Datum / Date:

~~Naptha Red~~  
~~IN AHA yellow~~  
~~Rayne's grey~~  
~~MAGGIE blue~~

Savage Meyer

---

Mark Lombardi  
 Studio ~~to~~ change

---

im Hodges  
 Rachel